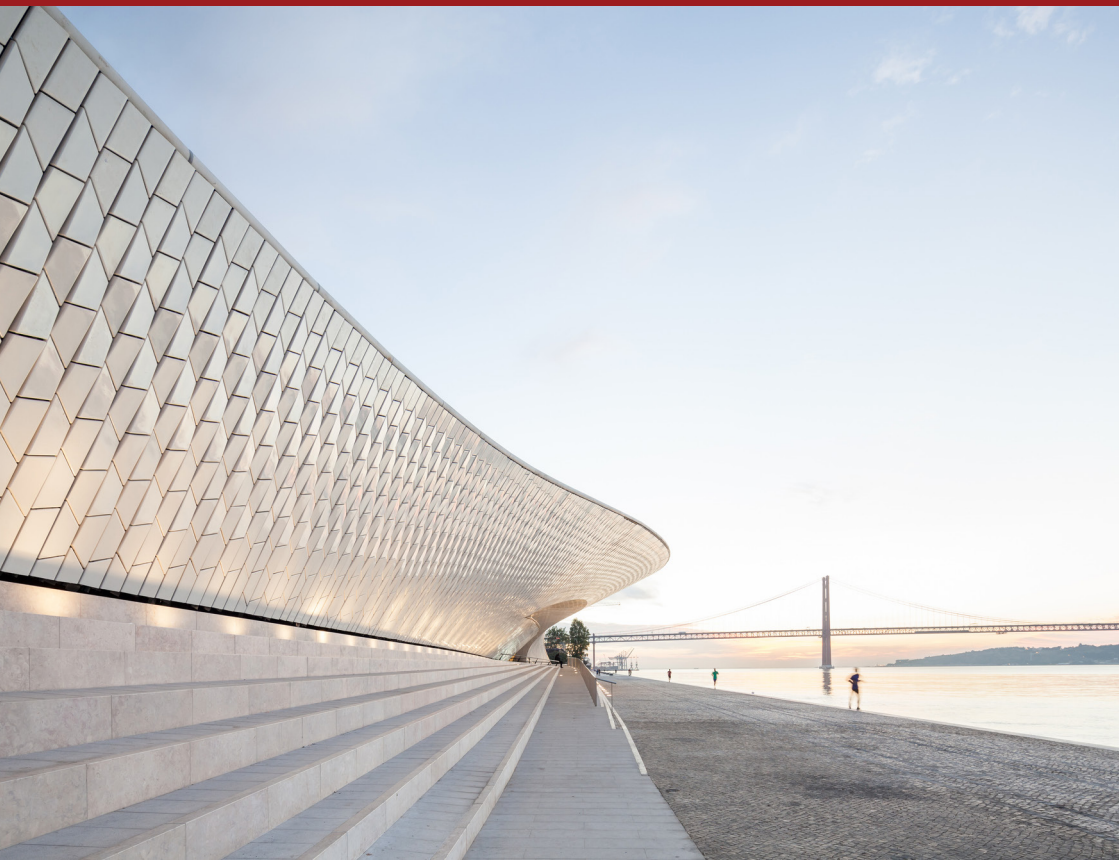


# ARTTABLE



**LISBON & PORTO**

**FRIDAY 13 - SATURDAY 21 JUNE 2025**

## *Morning arrivals in Lisbon*

### *Check in at the hotel.*

Long considered one of Lisbon's premier hotels, the **Olisippo Lapa Palace Hotel** was built as the private residence of the count of Valenças, and is ideally situated on Lapa Hill, Lisbon's most traditional and elegant district. The well appointed rooms have balconies overlooking the magnificent gardens and pool, and the hotel boasts stunning views of Lisbon and the Tagus River.

Individual lunch arrangements.



Above: Olisippo Lapa Palace Hotel  
Front cover: MAAT © Francisco Nogueira



*Museu Nacional de Azulejo*

### *Afternoon:*

Our first visit takes us to the **Museu Nacional de Azulejo**, a remarkable museum housed in the former Convento Madre de Deus. Originally built in the Manueline style, the convent was restored in Renaissance style under João III, and embellished again under João V with resplendent gilt baroque woodwork and azulejos - the Chapel of Santo Antonio still houses one of the most remarkable displays of azulejos from 1780. The cloisters of the church house the tile museum, which traces the development of Portuguese azulejo tiles from their introduction by the Moors in the 15th century. One of the highlights of the museum is Portugal's longest azulejo panel on the upper floor: a 40 metre panorama of Lisbon, completed c.1738, which offers a unique record of Lisbon before the devastating 1755 earthquake.

### *Evening:*

We enjoy a welcome drinks reception and private dinner in the Four Seasons Hotel Ritz's elegant **Marquês de Pombal** private room.





*Museu Calouste Gulbenkian*

### *Morning:*

We start our morning with a visit to the **Museu Calouste Gulbenkian**. The museum is home to the remarkable private art collection of Calouste Gulbenkian, a wealthy Armenian oil magnate who had an unerring eye and wide-ranging taste. After a welcome by the Director of the Museum, we will have a curator-led tour of the Founder's Collection, which includes works from Ancient Egypt to the early 20th century, spanning the arts of the Islamic World, China and Japan, as well as the French decorative arts, and a wide-ranging European painting collection which includes works by Rembrandt, Monet, Rubens, Manet, Renoir, Degas and Turner.

We also visit the outstanding, recently re-opened **CAM - Centro de Arte Moderna Gulbenkian**, which has been redesigned and reimagined by Kengo Kuma. CAM holds the largest and most complete collection of modern and contemporary Portuguese art, as well as works by international artists. The surrounding garden has been redesigned by landscape architect Vladimir Djurovic to create a fusion between architecture and landscape.



*Panels of St Vincent by Nuno Gonçalves*

Lunch will be at a local restaurant.

### *Afternoon:*

We start the afternoon with a tour of the **Museu de Arte Antiga**, Portugal's national art collection housed in a 17th-century palace, the former home of the Marquês de Pombal. The collection offers a comprehensive view of Portuguese art from the 12th - 19th centuries, as well as rich holdings of applied arts. One of the principal highlights is Nuno Gonçalves' 15th-century masterpiece depicting Lisbon's patron saint, St Vincent, receiving homage from the citizens. Other highlights include an outstanding silver collection and the Oriental collection, illustrating how the Portuguese were influenced by the 16th-century discoveries and the expansion of the empire.

We then continue to the **Fundação Arpad Szenes Vieira da Silva**, located in the old royal silk factory founded in 1734 during the reign of D. Joao V. The museum opened in 1994 as a result of the combined efforts of the Calouste Gulbenkian Foundation, the Luso-Americana Foundation and the City of Lisbon Foundation, as an homage to two of Portugal's most influential 20th-century artists. The museum showcases the rich collection of works by the Portuguese-French abstract painter Maria Helena Vieira da Silva and her husband Arpad Szenes. The museum has a regular programme of temporary exhibitions dedicated to artists whose works have a connection with da Silva or Szenes.

**Evening:**

Dinner will be at a local restaurant.



Maria Helena Vieira da Silva, 'Les jeu decartes', 1937

**Morning:**

This morning we drive towards the coast of Portugal and the town of Cascais, an ancient fishing port with stretches of sandy beaches and painted fishing boats in the harbour. Here, we enjoy a special visit to the **Casa Histórias Paula Rego**, a unique architectural monument designed by renowned Portuguese architect Eduardo Souto de Moura in 2008 as a museum for the works of visual artist Paula Rego. The dramatic red concrete pyramids make this one of the most striking modern buildings in the country.

We return to Belém for a visit to **MAC/CCB - Museu de Arte Contemporânea**. Formerly known as the Berardo Collection Museum, the MAC/CCB houses one of Lisbon's most acclaimed modern and contemporary art collections, which is also recognized as one of Europe's best. The museum collection offers a global perspective of visual arts from the 20th century to today, with an emphasis on European and American art. Among the highlights are Warhol's "Portrait of Judy Garland", Picasso's "Femme dans un Fauteuil (Métamorphose)", Roy Lichtenstein's "Interior With Restful Paintings" and Paula Rego's "The Barn".



MAC/CCB Museu de Arte Contemporânea



# ARTTABLE

Lunch will be at a local restaurant.

## *Afternoon:*

After lunch, we walk to The '**Monument to the Discoveries**', one of Portugal's most iconic landmarks, first conceived by the architect José Ângelo Telmo in 1940 as part of the Portuguese World Fair. In 1958, it was decided that a permanent monument was needed to celebrate the achievements of Portuguese mariners and the royal patrons involved in the development of the Portuguese Age of Discovery, and to commemorate the 500th anniversary of the death of Prince Henry the Navigator.



*Monument to the Discoveries*



*Museu Nacional dos Coches*

We conclude our afternoon at the **Museu Nacional dos Coches**. The museum's coach collection is now divided between a newly built modern museum and the 18th century royal riding hall, which was commissioned by Dom João V in 1726. The museum's remarkable collection is one of the largest and most valuable in the world. Heavily gilded and painted carriages made in Portugal, Italy, France, Austria and Spain date from the 16th to the 19th centuries.

## *Evening:*

Dinner will be at a local restaurant.



### *Morning:*

We start our morning at the **Museu-Escola de Artes Decorativas**, housed in the Palácio Azurara. The Portuguese art collector and banker Ricardo do Espírito Santo bought Palácio Azurara as a private resident for himself, restoring it as an 18th century aristocratic home and decorating it with items from his private collection, including rare goldsmith works, furniture, and carpets dating from the 15th to 19th centuries. He created the **Ricardo Do Espírito Santo Silva Foundation** to protect and disseminate the Portuguese decorative arts and crafts related to them. Besides the Museum of Decorative Arts, the Foundation today hosts 16 workshops of traditional Portuguese arts and crafts, keeping alive a highly important body of intangible heritage and knowledge, and ensuring specialized conservation and restoration of Portuguese heritage.

We continue to **MAAT - Museu de Arte, Arquitetura e Tecnologia**. Located on the riverfront in Lisbon's historical Belém district, MAAT comprises a former power station built in 1908 and a remarkable contemporary museum designed by Amanda Levete Architects. It is an innovative project which establishes a connection between the new building and Central Tejo Power Station, one of Portugal's most prominent examples of industrial architecture from the first half of the 20th century. MAAT's ambition is to present national and international exhibitions by contemporary artists, architects and thinkers.



*Museu de Arte, Arquitetura e Tecnologia*



*Museu-Escola de Artes Decorativas*

Lunch will be at a local restaurant.

### *Afternoon:*

Gallery visits - TBC

### *Evening:*

Dinner will be at a local restaurant.



### *Morning:*

We begin the day at the **MNAC - Museu Nacional de Arte Contemporânea, Museu do Chiado** in Lisbon's historic centre. Located in a former warehouse redesigned in a modernist style by French architect Jean-Michel Wilmotte, the state-owned collection charts 150 years of modern Portuguese art from Romanticism and Naturalism, through to Surrealist and Abstract works. MNAC was one of the first dedicated museums of contemporary art created globally when it was founded in 1911.

This morning we also enjoy a journey through Lisbon in our **privately hired tram**, offering a panoramic view of the city. To the east of the Praça do Comércio are the medieval quarters of Alfama and Mouraria, crowned by the magnificent Castelo de São Jorge. To the west lie Bairro Alto and Madragoa, with their typical streets.

Lunch will be at a local restaurant.



*The famous yellow icon of Lisbon*



*Joana Vasconcelos*

### *Afternoon:*

After lunch, we visit the working atelier of installation artist **Joana Vasconcelos**. Vasconcelos has built a celebrated 30-year career with her massive installations of hand-crafted sculptures. Employing a small army of artisans in her huge Lisbon studio, Vasconcelos creates serial works that honour women whose contributions to history are overlooked.

We then take a short drive to **MACAM Museu de Arte Contemporanea Armando Martins**, a brand new cultural project dedicated to modern and contemporary art which will open in early 2025. It is an unprecedented initiative that, for the first time in Portugal and Europe, integrates a 5-star hotel into the space of a museum.

### *Evening:*

This evening is free for individual arrangements.





*Palacio de Bacalhôa*

**Morning:**

Gallery visits - TBC

**Lunch & Afternoon:**

We depart by coach and cross the Rio Tejo to the **Palacio de Bacalhôa**, nestled in the foot hills of the Serra da Arrabida. The Palace itself dates back to the 15th century, formerly belonging to the Portuguese Royal family and having passed through several hands since. Today, it is proudly one of the country's best-preserved examples of Renaissance architecture, with an outstanding Portuguese tile collection. In 1936, the Bacalhôa estate was bought and restored by Orlena Scoville, and it was her grandson who was responsible for transforming Bacalhôa into one of Portugal's largest wine producers.

We will enjoy a private lunch at the **Quinta de Bacalhôa**, and sample some of the estate's award-winning wines. After lunch, we venture from the vineyards into the Renaissance Garden which Orlena Scoville had restored to its original layout, highlighted by an impressive hedge maze.

Return to the hotel for some time at leisure.

**Evening:**

We depart the hotel for a special private visit to the **Palácio dos Marqueses de Fronteira**. This wonderful palace is in an idyllic setting at the foot of the Monsanto Forest Park. Italian Renaissance influences are blended with Portuguese-inspired blue-and-white tiles throughout the palace. The official residence of the Marqueses de Fronteira is one of the most unique and well-kept examples of baroque architecture in Lisbon, and the palace is still inhabited by the descendants of the noblemen who built it in 1675. We will enjoy a private tour of the gardens and the Palácio.

Following our tour, we will make our way to dinner at a local restaurant.



*Palácio dos Marqueses de Fronteira*



### *Morning:*

Check out from the hotel.

We depart by coach for **Porto**, Portugal's second city and the one that gave the country its name. Porto is best known for its historic centre and the River Douro, classified as a World Heritage site, and more specifically for its port wine lodges, bridges, monuments, tiles, flowering balconies and medieval shopping streets.

Lunch at a local restaurant.

### *Afternoon:*

After lunch, we will drive to the **Fundação de Serralves**, a renowned cultural institution in Porto whose mission is to promote contemporary art and its associated disciplines. At its centre is the beautiful Art Deco **Serralves Villa**, which was designed by the Porto architect José Marques da Silva in the 1930's as the family summer residence of Count Carlos Alberto Cabral.



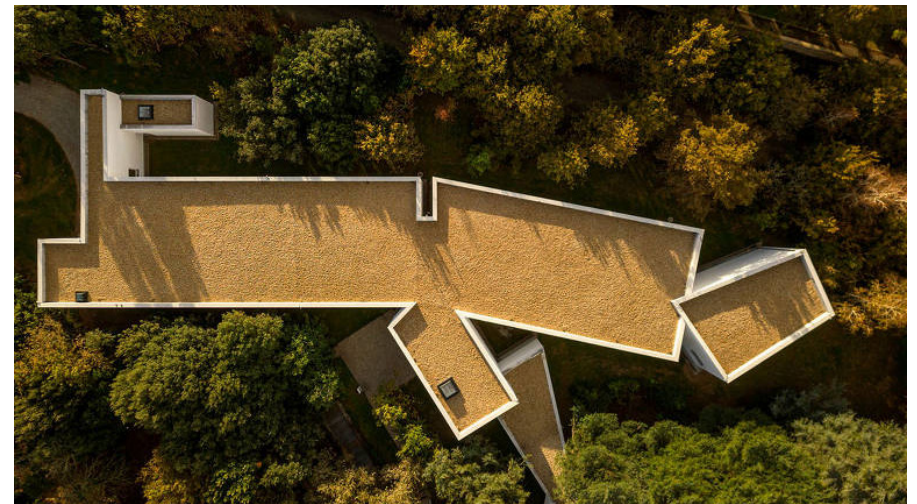
Fundação de Serralves

It is also home to the **Museu de Arte Contemporânea de Serralves**, housed in the Álvaro Siza building and holding some of the finest and most cutting-edge contemporary art in Portugal. A low-rise building that interferes with the landscape as little as possible, it's a serene, minimalist structure in white stucco, which integrates beautifully with its surroundings. International artists such as Luc Tuymans, Bruce Nauman and Helena Almeida have held exhibitions here. The Foundation also has a magnificent 18-hectare park that circles the museum, which today displays sculptures by Claes Oldenburg, Dan Graham, and Richard Serra.

We continue by coach to hotel and check-in at the 5-star **PortoBay Flores**, set in a palatial 16th-century building, with additional modern annex, and located on a walking street in the heart of historic Porto.

### *Evening:*

Dinner will be at a local restaurant.



Museu de Arte Contemporânea de Serralves



### *Morning:*

We start our final day of the tour with an opportunity to view Porto from a different perspective. We shall be taking a **river cruise** up the **Douro River**, offering a unique view of the enchanting local wine region and valley.

The most beautiful part of the Douro is the stretch between Mesão Frio and Pinhão, where the vineyards precariously cling to the steep terraces on either side of the river, forming a landscape resembling giant steps. With such unique terracing, the majestic views here offer a glimpse into the rich viticultural tradition that has shaped this region.

Established in 1756, the **Douro Valley** is the world's oldest demarcated wine region and a living testament to a rich history and culture that blends Anglo-Portuguese influences. The creation of port wine itself can be traced back to a unique period of cultural fusion during the Napoleonic Wars when an embargo on French wine led to the rise of this distinctive fortified wine.

We will enjoy lunch at a local restaurant.

*View of the Douro River and wine valley region*





# ARTTABLE

## *Afternoon:*

We spend the remainder of the afternoon in Porto. For those who wish, there is a free afternoon. Or there is the option to visit the **Museu Nacional de Soares dos Reis**, Portugal's first designated national museum founded in 1833 to showcase works of art from dissolved monasteries and convents, including a valuable collection of paintings, glass, ceramics and jewelry. Housed in a former royal residence, the museum features much of the work of its namesake, Antonio Soares dos Reis, including his famous marble sculpture, "O Desterrado" ("The Exile").

We return to the hotel for some time at leisure.



*Museu Nacional de Soares dos Reis*

## *Evening:*

We conclude our tour with a tasting and farewell dinner at the historic **Graham's Port Lodge**. Built on the hill above Vila Nova de Gaia in 1890, Graham's lodge commands spectacular views of the twin cities and the river gorge that separates them. The south bank is home to the great Port producers and their 'lodges', where the wines they made upriver in the Douro Valley would be bought to age in the cooler conditions near the coast, close to the Atlantic Ocean.

Today, these lodges fulfil a dual role, continuing to be a space for the storage and ageing of premium Port wines and also as visitor centres where wine lovers can learn all there is to know about the history of Port and the intricacies of its production, from vine to bottle and the people who make them.

One of Graham's port experts will guide us through their impressive storage of port wine barrels, known as "pipas", as well as their enormous store of vintage bottles. A selection of port tastings and food pairings will follow. We will then enjoy our final dinner at **Vinum restaurant**, with spectacular views of the Douro River and the lodge's 19th century barrel cellar.



*Graham's Port*

## Morning:

Breakfast and check out of **PortoBay Flores**.

Individual departures.



Graham's Lodge

## Tour Price

### *The cost of the tour to Lisbon and Porto (8 nights) is:*

- \$8,120 per person for double/twin occupancy
- \$9,610 per person for single occupancy

### *The tour cost includes:*

- 6 nights accommodation in Lisbon at the 5-star Lapa Palace (Garden Wing Rooms)
- 2 nights accommodation in Porto at the 5-star PortoBay Flores (Classic Rooms)
- Full breakfast in the hotel restaurant each day
- Meals at restaurants as per the itinerary:
  - 7 lunches
  - 7 dinners
- All visits and special private arrangements as per the itinerary
- Transportation by deluxe motor coach
- All museum entrance fees
- Services of an ArtsAbroad tour director throughout
- Expert Guides and Curators
- All gratuities for restaurants, guides, porters, drivers

### *The tour cost does not include:*

- International flights to/from Portugal
- Travel insurance
- Personal expenditure (such as laundry / telephone calls etc)
- Independent meals

*Room upgrades may be available – please call ArtsAbroad if you would like further information. We will also be pleased to book additional nights before or after the tour.*

*Please note that this itinerary is subject to change.*



**Tour arrangements by:**

**ArtsAbroad Limited  
291A Brompton Road  
London SW3 2DY  
U.K.**

**[info@artsabroad.co.uk](mailto:info@artsabroad.co.uk)  
[www.artsabroad.co.uk](http://www.artsabroad.co.uk)  
+44 (0)20 7589 9669**

